

MARLINK[®]

How to use the Marlink iDirect Modem Tool

Updated: May 22th 2012

Overview

This document covers in a brief overview how to use the Marlink created iDirect Modem Tool.

Required equipment and information:

- A Microsoft Windows based laptop (or PC) with either Windows XP, Windows Vista, Windows 7 or Windows 2000 Service Pack 3 installed.
(512 MB RAM recommended; 1 GHz processor or more; and at least 50 MB of free disk space).
- Up to date JAVA™ software installed.
- An Ethernet LAN cable plugged into a valid network switch within the onboard iDirect network.
- Alternatively, an Ethernet LAN cable plugged into LAN-A of the iDirect X5 modem.

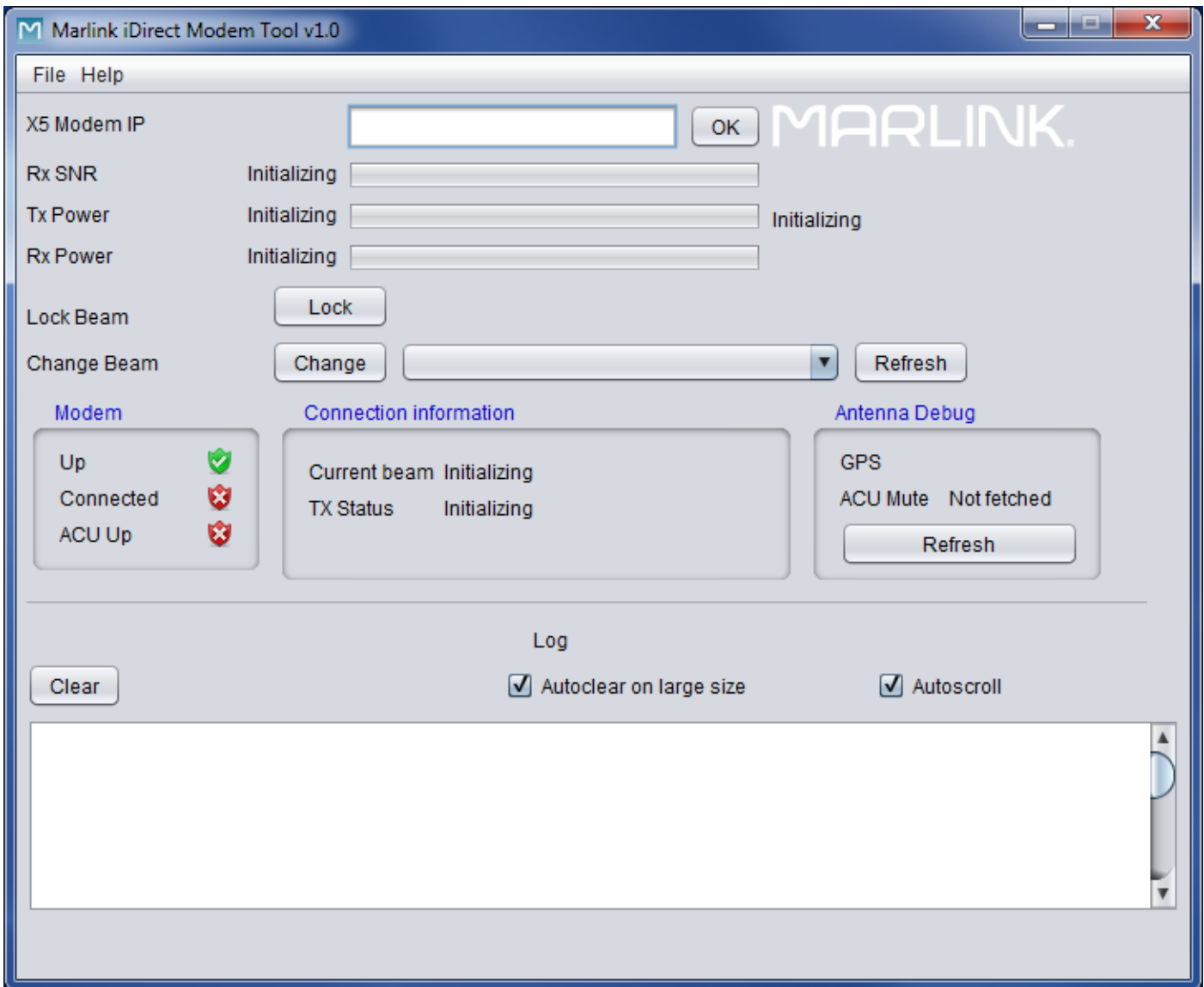
Procedure 1. Download and UnZip this program.

1. Download the required Marlink iDirect Modem Tool available at no charge from our ftp site located at: <ftp://ftp.vizada-usa.net/pub/SupportPage.htm>
2. UnZip (to any folder location) the file which you have downloaded.
 - a. There will be a sub-folder labeled 'lib' with 3 files; do not move or rename this file.
3. To run, double click on **iDirect.jar** within the main 'Marlink iDirect Modem Tool' folder.
 - a. Alternatively, you can create a short cut on your desk top at this point by left mouse clicking on and dragging iDirect.jar to your desk top. Before releasing the mouse, hold down the Alt key to bring up the shortcut option.

NOTE: Several tools, such as Info-Zip (at <http://www.info-zip.org/>), WinZip (at <http://www.winzip.com/>), or PKZIP (at <http://www.pkware.com/>), recognize the .zip format.

Procedure 2. Running the Program. (Screen shot on page 2)

1. If you haven't started the program already, perform so by double clicking on **iDirect.jar**
2. If the program is being used on a PC that has the iDirect modem as the default gateway (typically when connected directly to LAN-A or to the provided 8 port switch), the software should automatically find and auto fill the **X5 Modem IP** address field.
3. If the program is being used on a PC that behind another network device from the iDirect modem, then the program many not automatically find and auto fill the **X5 Modem IP** address field. In this case, you will need to know the iDirect modem IP address. Fill in this address manually.
4. From here you can perform GUI functions for most telnet session commands, such as:
 - beamselector lock periodically
 - beamselector switch ### -f
5. The program will also display Rx SNR values. (typically, anything over **6** is "good" **9** is "great")



MARLINK®